

Kitchen Hob Suppression

Technical Sheet

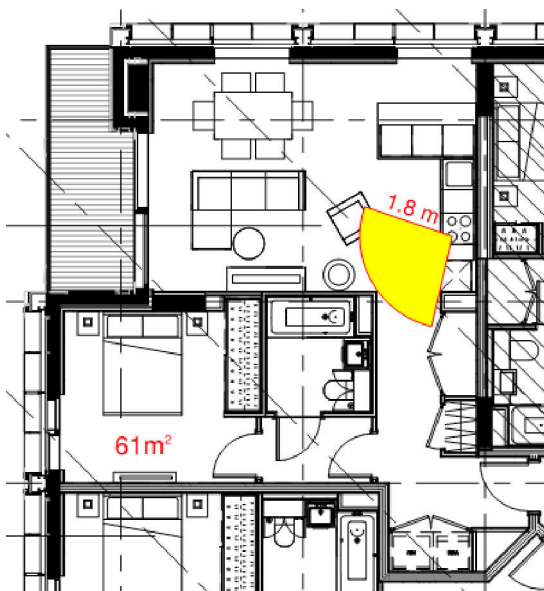
Designed for Studio, Open Plan and Student Apartment's where the cooking hob is close to the escape route or forms a risk.

Incorporating 'Hob Detection' to monitor the hob locally. Thus resulting in the hob suppression system operating to assist with means of escape.

'Hob Detection' works by means of electronic sensors located within the hood which monitor's the hob constantly. When the critical temperature is reached, a pre warning 10 second alarm is activated. Where no action is taken or the temperatures continue to rise it will then activate the suppression system to the hob. Once activated, the system will continue to sound and the hob will be dead locked in the off position until such time that the system is recharged.

The Hob Detection can incorporate Hob Guard to manage the cooking area. Hob Guard complies with the British Standard BSEN50615:2015 'Hob Fire Prevention Standard', which is the only British Standard for hob fires prevention.

The extinguishing unit can be located up to 2m to the right, from the extractor hood and covers up to 4 electrical hob rings.



Stock Codes

DMSS301 : Extinguishing Unit.

DMSS306 : Hob Electrical Contactor

DMSS307 : Fire Detection Interface



Features

Cost effective kitchen hob suppression system.

Extinguishing agent is Class F designed to fight fat fires (2kg).

Discharge nozzle & detection fitted within extractor hood.

Two stage detection.

Can incorporate BSEN50615:2015 'Hob Guard Unit' to manage the hob

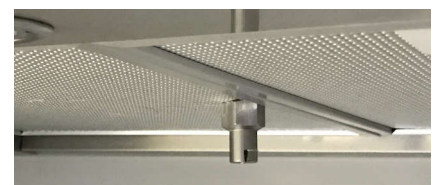
Unit is fitted with low voltage NO/NC volt free contacts which allows 3rd party interface to the hob electrics, detection system or external monitoring.

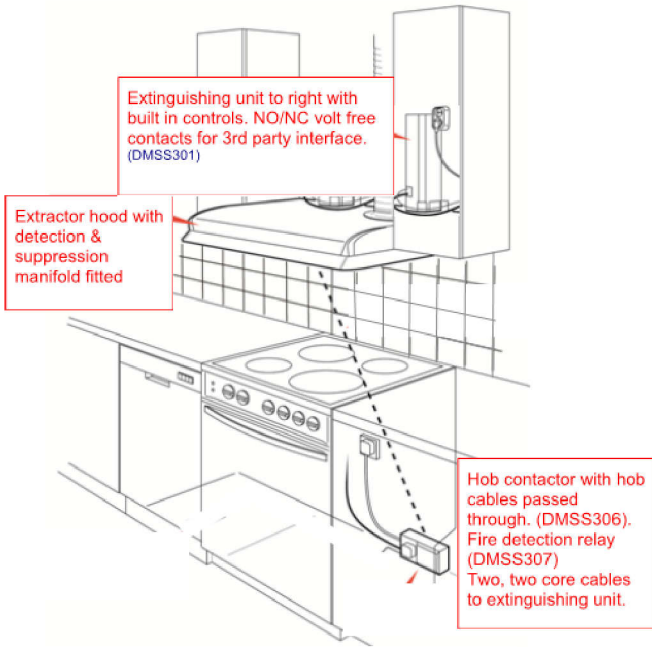
No yearly charging required to a detection tube.

Specification

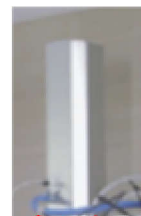
Extinguishing unit 240mmW x 130mmD x 530mmH.

230volt AC 3 amp power supply.





Apartment Consumer Unit



Suppression Unit (DMSS301)

Hob



Optional Electrical Contactor (DMSS306)

Optional Detection Interface (DMSS307)

- 1.5mm² 2 core cable
- 1.5mm² 3 core cable
- 1.5mm² 2 core cable