

Kitchen Guard

Technical Sheet



Designed for Studio, Open Plan and Student Apartment's to reduce the kitchen hob risk and activate sounders throughout the apartment, thus allowing relaxation on the hob position and restrictions on the open plan area of the apartment.

MANAGING THE RISK BEFORE IT BECOMES A FIRE.

Incorporating 'Hob Guard' to monitor and control the hob locally, intelligent apartment ceiling detectors incorporating the Hob Guard output signal activates the sounders throughout the apartment, all resulting in the hob, oven and worktop sockets isolating the power to prevent a fire occurring.

Hob Guard works by means of four sensors which monitor the hob constantly, raising a pre warning 15 second alarm. Where no action is taken or conditions become critical, the power to the hob and kitchen worktop sockets will be isolated and the room sounders activated.

Hob Guard comes from Norway where the Building Regulations require all kitchen hobs to be fitted with a monitoring Hob Guard in accordance with EN50615:2015 'Hob Fire Prevention Standard', resulting in reduced numbers of cooking incidents since its introduction.

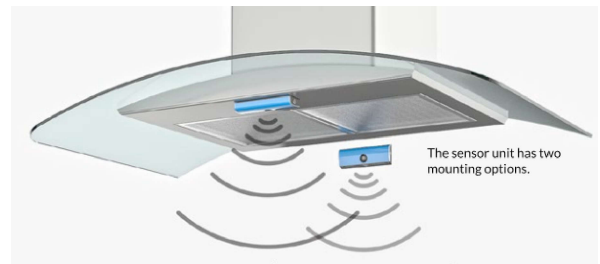


This also gives additional local hob detection, over that of the ceiling mounted heat detector which takes longer to register, thus improving detection times and getting the occupants moving earlier.

The Kitchen Guard concept was designed for Studio and Open Plan Apartments where the 'Cooking Appliances' opens to the living space. This gives Fire Engineers a system to assist in presenting a case for designing the risk areas out, allowing greater flexibility with open plan apartments, regardless of the floor area.

Stock Codes

- DMS126 : 26 amp hob guard unit
- DMS132 : 32 amp kitchen guard interface box
- DMS101 : Ionisation intelligent smoke detector (alkaline)
- DMS102 : Optical intelligent smoke detector (alkaline)
- DMS103 : Intelligent heat detector (alkaline)



Features

Hob Guard prevents hob fires occurring by constantly monitoring the hob and isolating the power supplies prior to dangerous conditions occurring.

Allows trade off in studio apartments giving greater flexibility with the hob positions.

Allows kitchen to be part of the open plan in LD1 & sprinklered apartments exceeding 32m² in area as restricted by BS9991:2015.

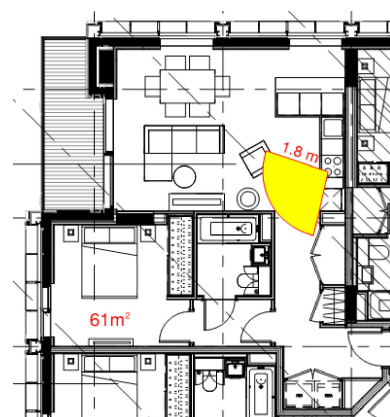
Activation of hob guard in fire mode, operates the LD1 sounders and removes power supplies to the kitchen sockets and oven.

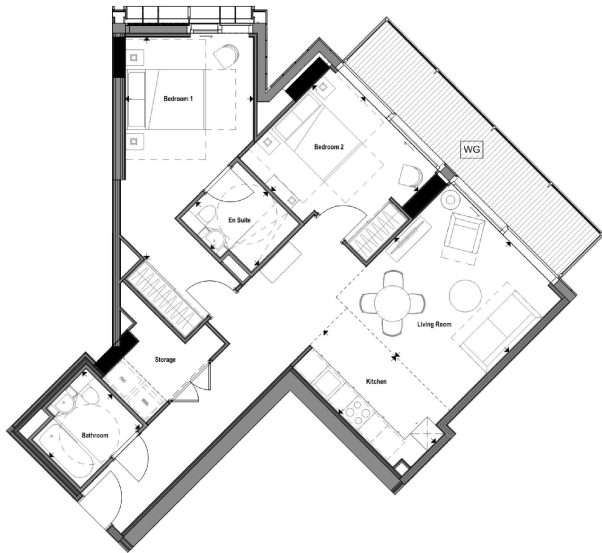
Hob Guard is tested and certificated to 25 amp hobs to show compliance with the European Standard EN50615:2015.

Intelligent LD1/2 Smoke & Heat detectors to BS 5446-2 and BS5839.

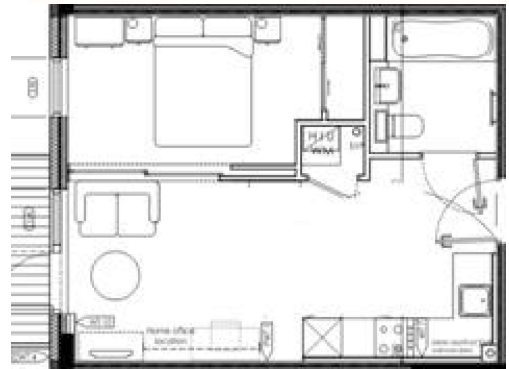
System manually reset's after activation and is ready to protect the hob and kitchen again.

Where a fire sprinkler flow switch is not installed Kitchen Guard can monitor the floor for water where the interface is fitted. This can result in activation of the sounders on operation of the fire sprinklers or an appliance leak.





181m² Sprinklered/LD1 'Kitchen Guard' Open Plan Apartment



37m² LD1 'Kitchen Guard' Studio Apartment
(no sprinklers)

